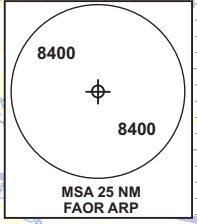
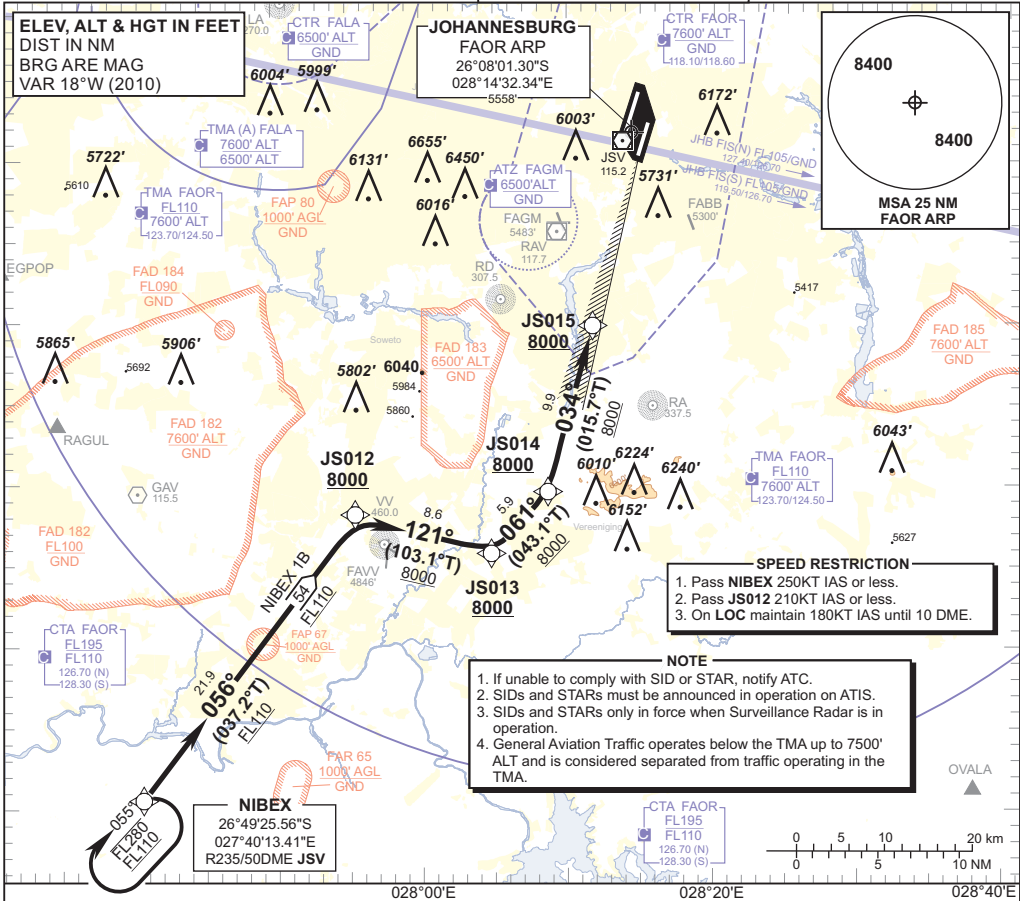


**STANDARD ARRIVAL
CHART -
INSTRUMENT
(STAR)**

TRANSITION ALTITUDE
8000'
TRANSITION LEVEL
ATC

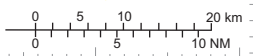
RADAR APP S 124.50 TWR E 118.60
E 124.50 W 118.10
W 123.70 ATIS 126.20
DIR 121.40 115.20
ACC N 126.70 SMC 121.90

JOHANNESBURG
(O.R. TAMBO INTERNATIONAL)
RNAV (GNSS) RWY 03R
NIBEX 1B



- SPEED RESTRICTION**
1. Pass NIBEX 250KT IAS or less.
 2. Pass JS012 210KT IAS or less.
 3. On LOC maintain 180KT IAS until 10 DME.

- NOTE**
1. If unable to comply with SID or STAR, notify ATC.
 2. SIDs and STARs must be announced in operation on ATIS.
 3. SIDs and STARs only in force when Surveillance Radar is in operation.
 4. General Aviation Traffic operates below the TMA up to 7500' ALT and is considered separated from traffic operating in the TMA.



**NIBEX 1B
RWY 03R :**

Leave NIBEX for JS012. At JS012 turn right to JS013. At JS013 turn left to JS014. At JS014 turn left proceeding to JS015 and intercept the ILS LOC RWY 03R.

COMMUNICATION FAILURE PROCEDURE (Squawk 7600)

Before NIBEX: Proceed to NIBEX and enter the NIBEX RNAV (GNSS) hold. Hold at last assigned level for minimum 5 MIN, then descend to FL130 in the hold or maintain last assigned level if below FL130. Leave NIBEX on the "After NIBEX" Communication Failure Procedure.

After NIBEX: Continue on the NIBEX 1B RNAV (GNSS) STAR to JS012. At JS012 descend to FL100, at JS013 descend to FL090, at JS014 adjust to 9000'ALT. At JS015 complete a straight-in ILS approach and land RWY 03R.

Note: Aircraft entering the TMA at FL110 and below are to enter the NIBEX RNAV (GNSS) hold at last assigned level and continue on the routing for the NIBEX 1B STAR.

Caution: Holding patterns below FL110 will be conducted partially outside controlled airspace.

In the event of a missed approach with the intention of diverting to an alternate aerodrome, proceed as follows:

- To the North and North-West: Follow the routing for the VASUR 3A SID.
- To the North-East: Follow the routing for the EGMEN 2A SID (Jet ACFT) or EXOBI 1A SID (Turbo prop ACFT).
- To the South-East: Follow the routing for the APDAK 3A SID.
- To the South and South-East: Follow the routing for the RAGUL 3A SID.

CHANGE: SPEED RESTRICTION BLOCK